



Ninth Annual Nevada Day Battle of the Bands

October 28, 2022

Spanish Springs High School
1065 Eagle Canyon Drive
Sparks, Nevada 89441

IMPORTANT EVENT INFORMATION FOR ENSEMBLES

Check-In Table:

The Director Check-In table is in the circle in front of the school (see site map). Packets will only be distributed to directors unless arrangements are made in advance.

Parking:

The SSSH campus is limited with respect to parking large vehicles. The information you provided on your entry form/registration (number of busses, etc.) has been used to create a parking plan. Please communicate to the parents that may be traveling with you, in personal vehicles, to use the spectator parking entrance and lot.

Restrooms:

Port-A-Potties will be available by the front circle of the school. The school building will not be open.

Hospitality:

Due to the short length of the event there will not be a hospitality area provided.

Wristbands:

In your arrival packet you will find wristbands for your students and chaperones. A wristband is required for entrance to the bleacher/seating area. You may use as many individuals as you need to move equipment, props, etc. into the field area. These individuals do not need a wristband to enter the track area but will need one to enter the seating area.

SNBS Badges:

If your band has not participated in an SNBS contest prior to this event your Director and Staff badges will be in your welcome/arrival packet.

Contest Schedule:

Please refer to the Contest Schedule for your bands warm-up time, warm-up area, travel time, gate time and performance time.

Warm-Up Areas:

Warm-Up Areas (A and B) are marked on the site map. Please face away from the stadium when playing. There is a separate color guard warm-up area (see site map). This area is in the quiet zone so no PA, metronomes, jam blocks, etc. There is no separate percussion warm-up area. Playing is not allowed in the "lot" due to the close proximity to the warm-up areas. Your cooperation is much appreciated.

Note: The entire SSHS Campus becomes a Silent Zone (except for the designated warm-up areas and times) at 12:00 Noon (first performance).

Visual Warm-Up:

Be careful of visual warm-ups in the bus/trailer parking area. Please do not block the "road" as busses and trailers are being parked. Watch out for pit carts, etc. as well.

Props and other Equipment:

Large props may be staged on the track in the endzone before a bands performance. All props must be moved to this area prior to the start of the contest or on a break.

Performer Re-Entry:

Performers in uniform or with a performer wristband may re-enter the stadium at any time.

Staff Viewing Area/Sound Mixing Area:

The photo decks on either side of the press box are reserved for staff viewing and sound mixing. Please do not enter this area before the prior bands performance as space is limited._

Field & Hash Marks:

The field will be marked with standard high school lines, inserts and hash marks. Yard markers will be place on both sides of the field.

Drum Majors and Captains:

Drum Majors and Captains will aseemble on the trach near the band entrance gate immediatley after the SSHS Band concludes it exhibition performance. A contest official will line everyone up in performance order and cue your entrance form the awards ceremony.

Judges for the Nevada Day Battle of the Bands:

Music Effect: Phil Haines
Visual Effect: Scott Pizani
Music Ensemble: Lorne Reid
Visual Ensemble: Dan Smith
Timing and Penalties: Rick Moffit

Adjudication Comments:

Adjudication commentary will be uploaded to ShowDay at the conclusion of the event. Please be sure you know how to access your unit page in ShowDay.

Video:

Each band will have a video pass in their welcome packet. This pass will allow one videographer access to the photo deck to video tape your bands performance.

Inclement Weather Plan:

In case of inclement weather, the contest will move to a standstill event in the SSHS Main Gym. Contest order will remain the same but warm-up areas will be moved indoors as well. Warm-up area information will be distributed on-site if necessary.

Contest Rules:

See the SNBS Handbook on the SNBS part of the eNVisionarts.org web-site.

Contest Day Communication:

You will be able to reach me via cell phone (775-560-2405) until 12:00 noon on contest day. After 12:00 I can be contacted via radio from the check-in table.

Drum Major Podiums:

If you are setting up a drum major podium on the track you **must have the legs sitting on boards** to protect the track surface. Please plan accordingly.

Contest Rules:

Contest rules and procedures can be found under SBNS section of the eNVisionarts.org website. Please be sure to review the announcement procedure with your Drum Majors.

FOP SPECTATORS AND GUESTS

PARKING:

Spectator parking is next to the stadium. Spectators must enter the school via the spectator parking entrance located off Eagle Canyon Rd -past the entrance to the high school.

HANDICAP PARKING:

Handicap parking is located next to the stadium

TICKET PRICES:

Admission prices for this event are Adults \$10.00, Senior Citizens \$5.00, and Under 12 Free. All adults will receive a complementary program with admission. ***Please note that WCSD ID's are not accepted at this event – please pass this information on to your parents and followers.***

Credit cards are not accepted at the ticket booth. We can accept checks. The nearest ATM is in the 7-11 at Eagle Canyon and Pyramid.

EVENT START TIME:

The first performance is at 12:00 noon.

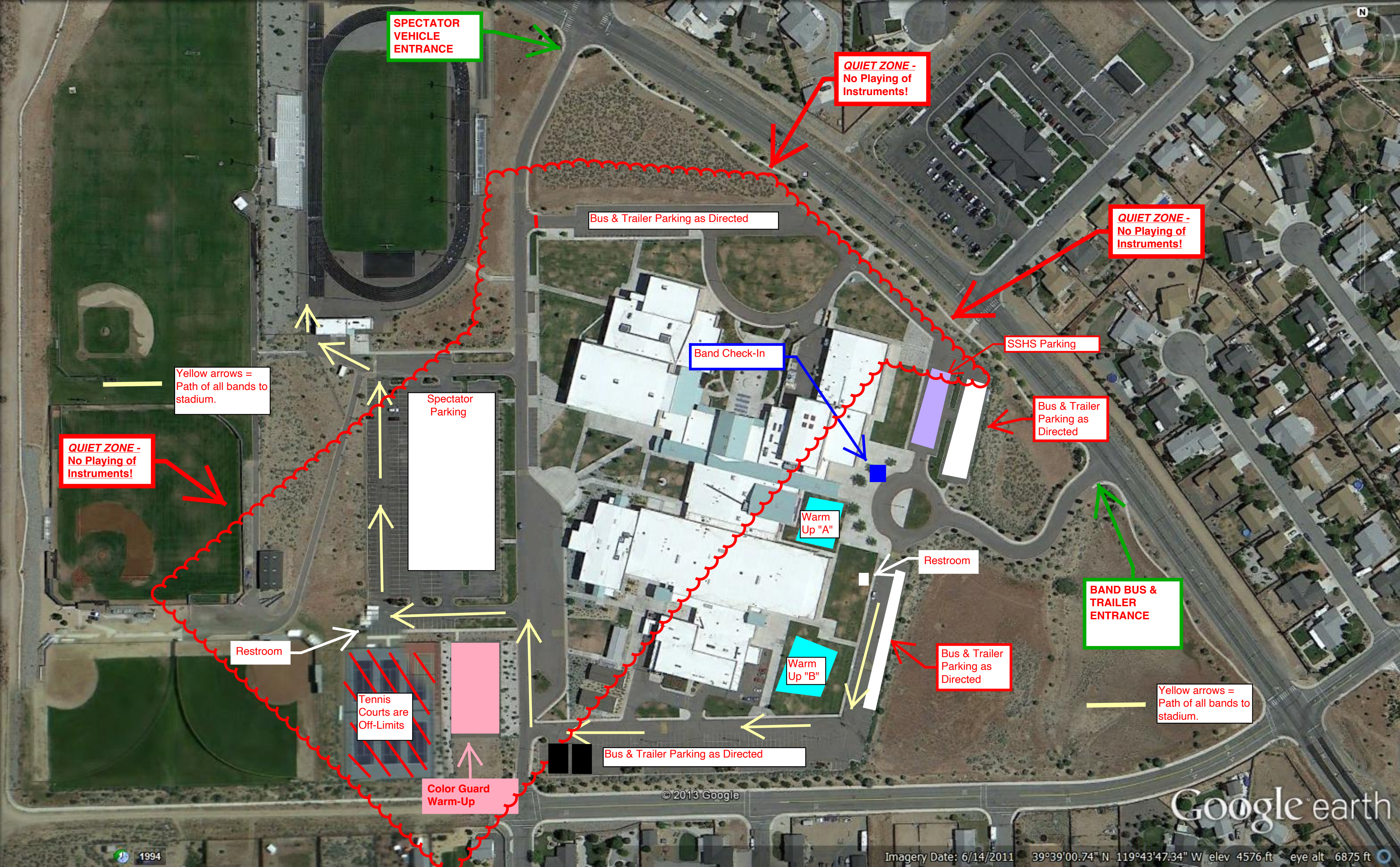
PROGRAMS:

Programs are provided complimentary with admission ticket.

NINTH ANNUAL NEVADA DAY BATTLE OF THE BANDS OCTOBER 28, 2022

(updated)

Class	School	Warm-up	Travel	Gate	Performance
A	Dayton	11:15 (B)	11:45	11:55	12:00
A	Churchill Co	11:30 (A)	12:00	12:10	12:15
BREAK					
AA	McQueen	12:00 (B)	12:30	12:40	12:45
AA	Fernley	12:15 (A)	12:45	12:55	1:00
AA	Galena	12:30 (B)	1:00	1:10	1:15
AA	NVHS	12:45 (A)	1:15	1:25	1:30
BREAK		15 mins			1:45
AAAA	DRHS	1:15 (B)	1:45	1:55	2:00
AAA (Host)	SSHS	1:30 (A)	2:00	2:10	2:15
BREAK		15 mins			2:30
AWARDS			2:45pm		



SPECTATOR
VEHICLE
ENTRANCE

QUIET ZONE -
No Playing of
Instruments!

QUIET ZONE -
No Playing of
Instruments!

Bus & Trailer Parking as Directed

Band Check-In

SSHS Parking

Bus & Trailer
Parking as
Directed

Yellow arrows =
Path of all bands to
stadium.

QUIET ZONE -
No Playing of
Instruments!

Warm
Up "A"

Restroom

BAND BUS &
TRAILER
ENTRANCE

Restroom

Tennis
Courts are
Off-Limits

Color Guard
Warm-Up

Warm
Up "B"

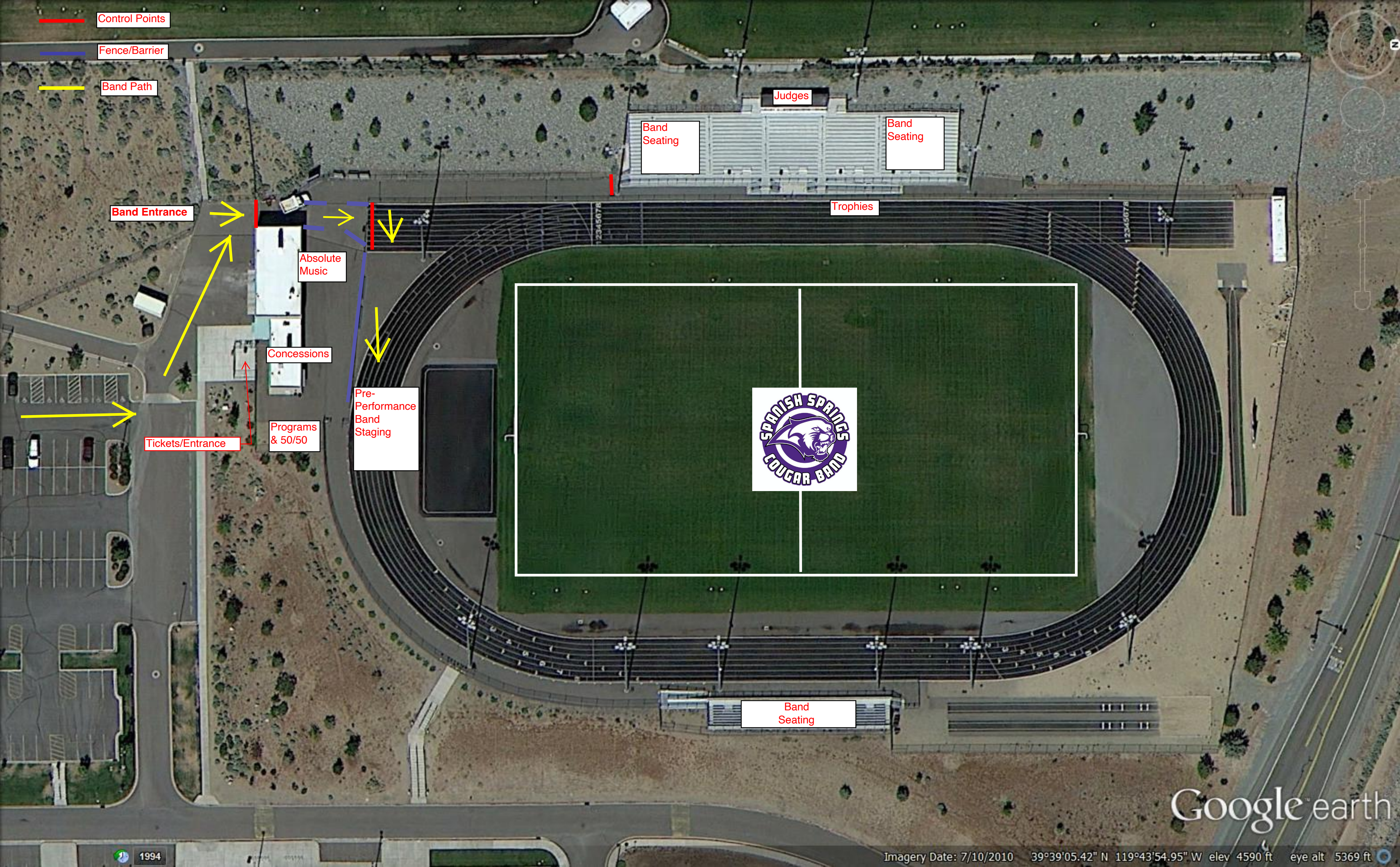
Bus & Trailer
Parking as
Directed

Yellow arrows =
Path of all bands to
stadium.

Bus & Trailer Parking as Directed

© 2013 Google

Google earth



Control Points

Fence/Barrier

Band Path

Band Entrance

Tickets/Entrance

Absolute Music

Concessions

Programs & 50/50

Pre-Performance Band Staging

Band Seating

Judges

Band Seating

Trophies



Band Seating

Google earth

1994

Imagery Date: 7/10/2010 39°39'05.42" N 119°43'54.95" W elev 4590 ft eye alt 5369 ft